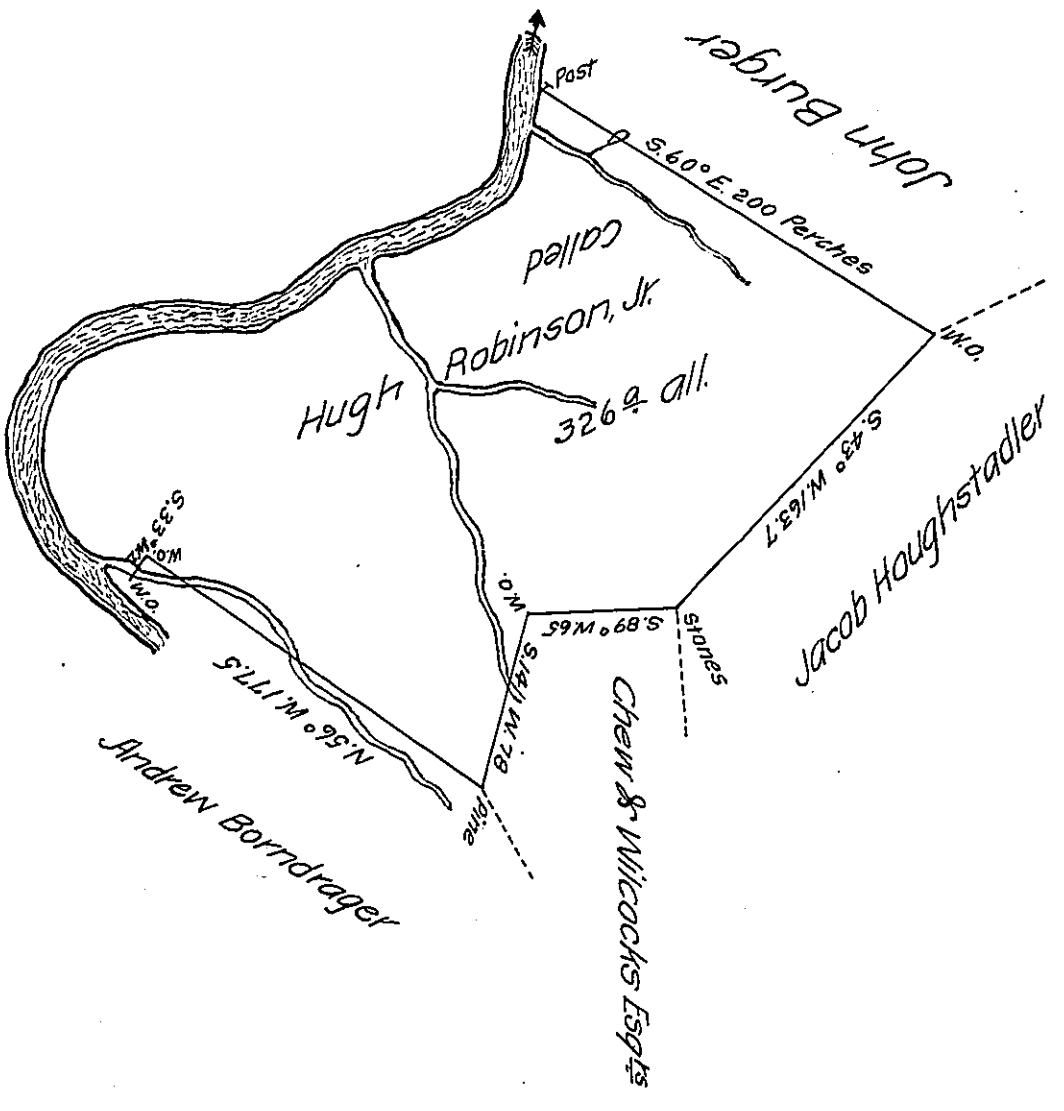


Courses and Distances down Castleman's River Beginning at a forked White Oak on the Bank.

N. 46° W. 50 Perches
 North 54 Ditto
 N. 69° E. 52 Ditto
 N. 86° E. 45 Ditto
 N. 62° E. 124 Ditto
 N. 12° E. 40 Ditto
 to a Post on the Bank. 365



Situated on the East side of Castleman's River including his Improvement in Brother's Valley Township, Bedford County and Surveyed the 28th day of April 1786. In pursuance of a Warrant dated the 6th day of January 1786.

for Alexander M^cClean, Esq^r D. S.

*To John Lukens, Esq^r
 Surveyor General*

Thomas Vickroy

IN TESTIMONY that the above is a copy of the original remaining on file in the Department of Internal Affairs of Pennsylvania, made conformably to an Act of Assembly approved the 16th day of February, 1833, I have hereunto set my Hand and caused the Seal of said Department to be affixed at Harrisburg, this twenty-third day of September, 1907.

*Henry Horick
 Secretary of Internal Affairs.*